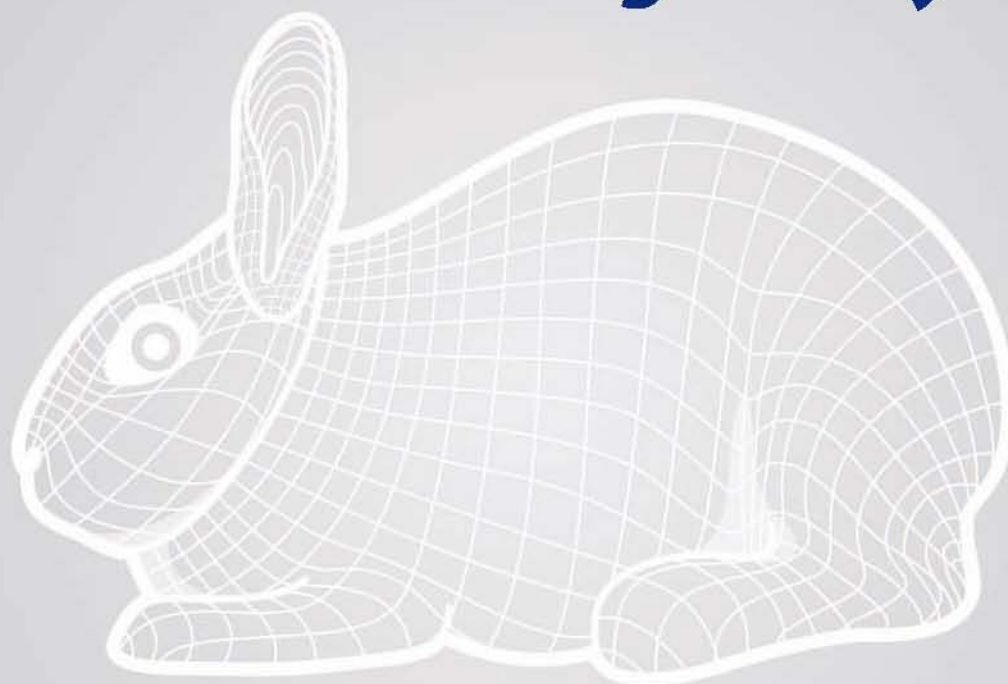


CUNIPIC®

VET LINE

making it easy



Special Diet for Rabbits, Ferrets, Guinea Pigs & Small Rodents





TABLE OF CONTENTS

RABBITS

Renal Detoxication	8
Intestinal	10
Respiratory	12
Dental	14
Skin Support	16
Obesity	18
Regular	20

RABBITS AND RODENTS

Herbal Convalescents and Herbal Convalescents Extra Fine	22
--	----

GUINEA PIGS

Intestinal	26
Respiratory	28
Skin Support	30

SMALL RODENTS

Intestinal	34
Respiratory	36

FERRET

Intestinal	40
Skin Support	42
Respiratory	44

BEFORE-AFTER	46
---------------------	----

DISPLAY RACK	47
---------------------	----







VET LINE

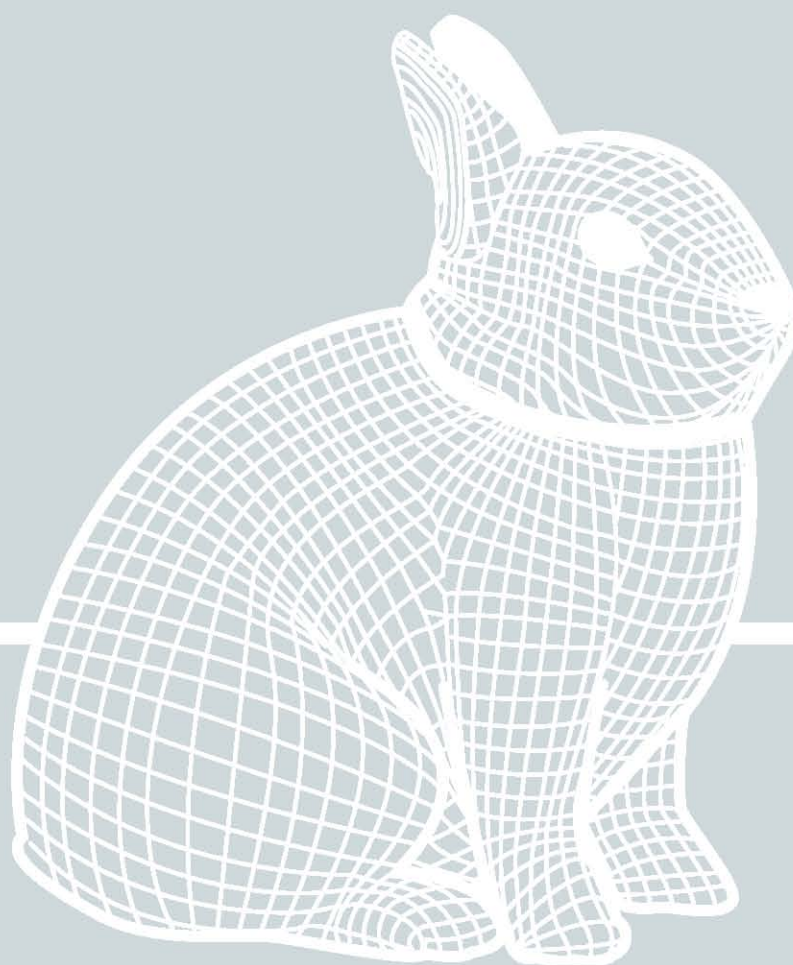
CUNIPIC is a leading european company in the selection, breeding and reproduction of small animals. We always have more than 25.000 animals in our facilities, including many different species. In the past few years, we have been working hard to increase the beneficial effects of pharmacological treatments.

Medicinal herbs have been used by us since many years, which, as we came to find out, raise the quality of pet food formulas. Our new **CUNIPIC VET LINE** is a varied set of diets which includes different medicinal plants in every formula to help and complement the medical treatment from your veterinarian. It offers a wide range of dietary treatment solutions developed for the most frequent illnesses that occur with rabbits, guinea pigs, chinchillas, small rodents, squirrels and ferrets.

Reputable veterinary clinics, nutritionists and vets engaged in the production of animals have taken part in the development of this product line.

making it easy



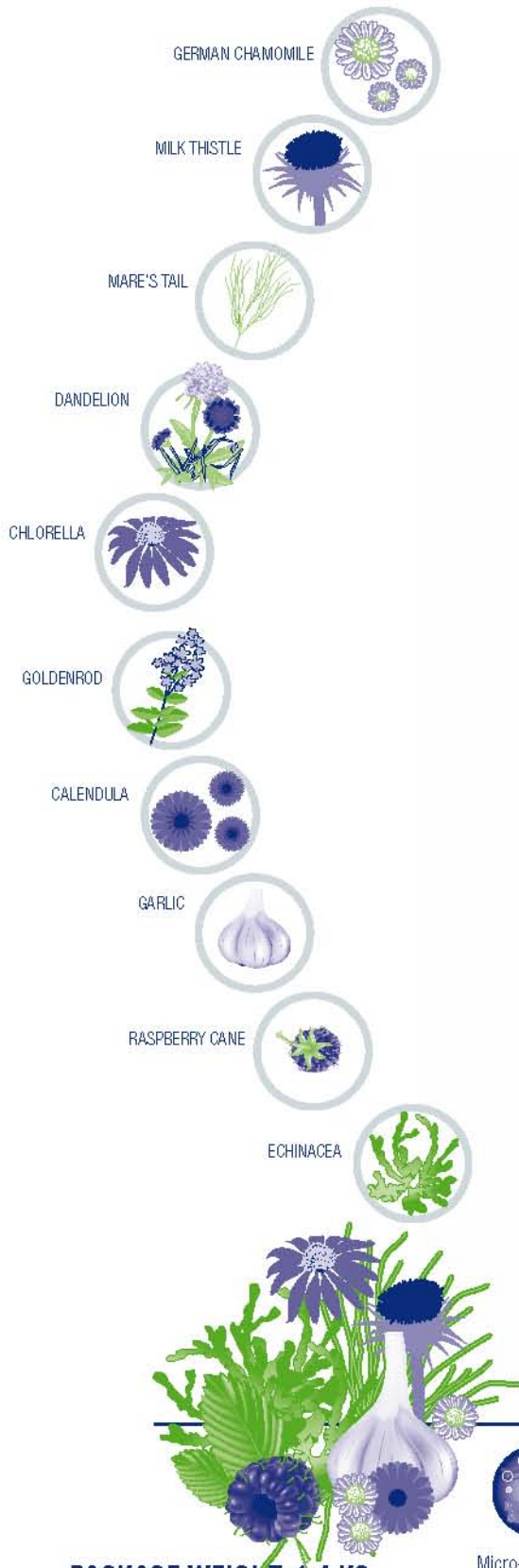


Rabbits



VET LINE

making it easy



PACKAGE WEIGHT: 1,4 KG



Micro-organisms which remain active in the intestines. With very beneficial effects: helping to balance out bacterial flora & boosting the immune system



Highest quality, stability & freshness guaranteed. This new packaging prevents the oxidation of vitamins and omega-3 and 6 fatty acids



Formula with an organ-purifying and -detoxifying effect



Works with the organ-metabolic system



Increases the body's defences against infectious diseases



Assists the elimination of harmful substances from animals' bodies



Rabbits

Renal Detoxication

VETPRO

DESCRIPTION:

Complete feed with medicine plants that help the correct function in the renal and kidney system of the rabbits. Many illnesses and situations of overexertion are related to the toxic state of an organ. The medicinal plants contained in this formula (for example: *Calendula*) are known for their ability to support liver, kidney and urinary system functions.

The Chlorella included in the recipe is a fresh water algae that can counter-act toxic substances and improve the body's resistance to infections. A diet featuring these plants is suitable for tackling both acute and chronic liver and kidney problems.

Because this product is 100% natural and free of side-effects, it can be used for a longer period of time.

COMPOSITION:

Wild meadow hay, sunflowermeal, wheatmeal, german chamomile (*matricaria recutita l.*), milk thistle (*silybum marianum*), mare's tail (*equisetum pratense*), dandelion (*taraxacum officinale*), barleycorn, alphas, chlorella (*chlorella spp.*), goldenrod (*solidago virgaurea*), calendula (*calendula officinalis*), garlic (*allium sativum*), raspberry cane (*rubus idaeus*), natural prebiotics and probiotics, echinacea (*echinacea purpurea*).

MAIN ACTIVE COMPONENTS:

- GERMAN CHAMOMILE (*Matricaria recutita L.*)
- MILK THISTLE (*Silybum marianum*)
- MARE'S TAIL (*Equisetum pratense*)
- DANDELION (*Taraxacum officinale*)
- CHLORELLA (*Chlorella spp.*)
- GOLDENROD (*Solidago virgaurea*)
- CALENDULA (*Calendula officinalis*)
- GARLIC (*Allium sativum*)
- RASPBERRY CANE (*Rubus idaeus*)
- ECHINACEA (*Echinacea purpurea*)

INSTRUCTIONS FOR USE:

Administrate according to veterinary prescription. Keep in a cool dry place.

Administrate the first 10 days together with usual feed at 50%, progressively enlarge the ration until we achieve the 100% of the indicated feed. Due to the lack of adverse symptoms, in animals that it is required, the feed can be extended during all the animal's life. Do not add new feed to the animal until it has consumed all the mixture totally.

LEAVE CLEAN AND FRESH WATER AT COMPLETE DISPOSAL.

Where the liver, renal or toxic illness is not cured after a period of one month, the diet may be extended as indicated by your vet. This diet does not cause adverse effects.

Renal failure often leads to hyperphosphatemia. Our formula prevents the accumulation of phosphorus and urea, thus limiting the evolution of the renal failure. Moreover, the formula protects the digestive system, and prevents the appearance of gastric and intestinal ulcers.

INDICATIONS:

- Chronic Renal Failure (CRF)
- Acute Renal Failure (ARF)
- Non-specific toxic conditions
- Urolith recurrence management
- Hepatic encephalopathy
- Post-surgery (detoxification of the anaesthesia)
- After anti-microbial or anti-inflammatory treatment

CONTRA-INDICATIONS :

- Pregnancy
- Breast feeding
- Animals < 4 months

Recipe with an organic purifying and detoxifying effect ✓

Assists the elimination of harmful substances from the organs of animals ✓

Increases the body's defence system against infectious diseases ✓

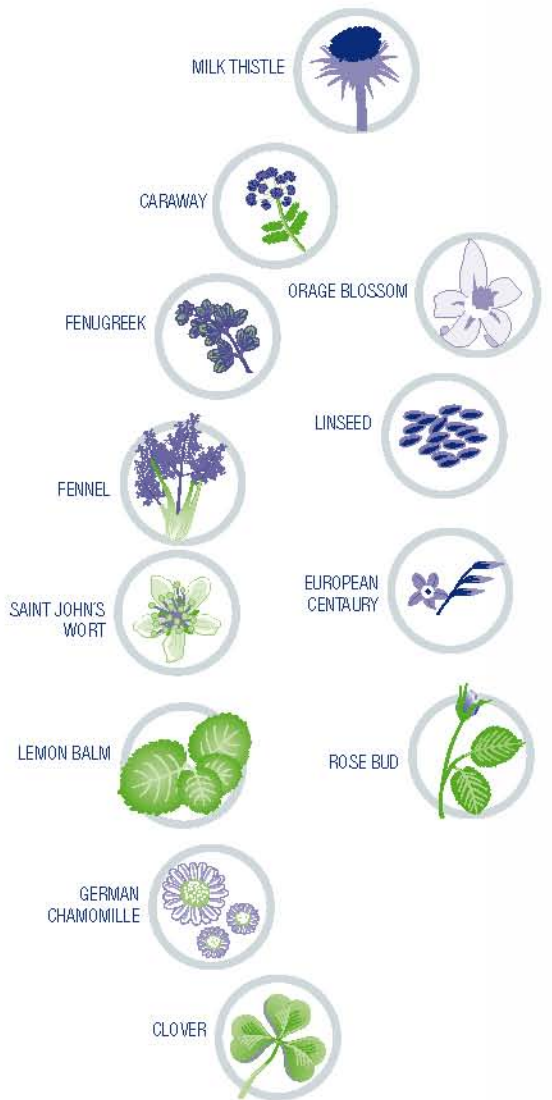
Works with metabolic and detoxifying systems ✓

RECOMMENDED DAILY INTAKE:



VET LINE

making it easy



PACKAGE WEIGHT: 1,4 KG



Micro-organisms which remain active in the intestines. With very beneficial effects: helping to balance out bacterial flora & boosting the immune system



Highest quality, stability & freshness guaranteed. This new packaging prevents the oxidation of vitamins and omega-3 and 6 fatty acids



Contributes towards better digestion and absorption of food.



Made with top-quality raw materials that have a prebiotic effect



Improves the body's defences against infectious diseases.



Prevents dysbiosis of the intestinal microflora and fights against tympanism



Rabbits

Intestinal

VETRI

DESCRIPTION:

Complete feed with medicine plants that help the correct digestive function of the rabbit. Good intestinal function is the key to a body's health.

The medicinal plants and herbs contained in this formula (for example: *Centaurium and Hypesicum*) have an anti-inflammatory effect that act as detoxifiers. They protect stomach and intestinal mucus, reduce flatulence and help the body to absorb the nutritive substances of feed. The use of this natural product is recommended for all types of digestive problems. It will also improve the way your pet eats because of its attractive smell and palatability.

It can be used for longer periods of time without causing any side effects.

COMPOSITION:

Wild meadow hay, sunflower-meal, wheatmeal, barley-corn, milk thistle (*Silybum marianum*), caraway (*carum carvi*), fenugreek (*trigonella foenum-graecum*), fennel (*foeniculum vulgare*), saint john's wort (*hypericum perforatum*), lemon balm (*melissa officinalis*), german chamomile (*matricaria recutita l.*), clover (*trifolium pratense l.*), orange blossom, natural prebiotics and probiotics, linseed (*linum usitassitimum*), european centaury (*centaurium erythraea*), rose (*bud*).

MAIN ACTIVE COMPONENTS:

- MILK THISTLE (*Silybum marianum Gaertn.*)
- CARAWAY (*Carum carvi*)
- FENUGREEK (*Trigonella foenum-graecum*)
- FENNEL (*Foeniculum vulgare*)
- SAINT JOHN'S WORT (*Hypericum perforatum*)
- LEMON BALM (*Melissa officinalis*)
- GERMAN CHAMOMILLE (*Matricaria recutita L.*)
- CLOVER (*Trifolium Pratense L.*)
- ORANGE BLOSSOM
- LINSEED (*Linum usitassitimum*)
- EUROPEAN CENTAURY (*Centaurium erythraea*)
- ROSE BUD

INSTRUCTIONS FOR USE :

Administrate according to veterinary prescription. Keep in a cool dry place.

Administrate the first 10 days together with usual feed at 50%, progressively increase the ration until we achieve the 100% of the indicated feed. In case of acute illness, the diet treatment should last for at least 30 days in order to regenerate the hair on the lining of the intestine and allow the lagomorph's complex intestinal flora to recover.

Do not give your pet more food until it has consumed the entire mixture.

ENSURE THAT THE ANIMAL ALWAYS HAS CLEAN FRESH WATER AVAILABLE.

In case of chronic illness, the dietary treatment can last for life depending on the advice of your vet. The high digestible ingredients of the formula, compensate the enzymatic reduced activity of an altered intestine, helping the absorption of the nutrients. The formula contains probiotics, prebiotics and the essential fatty acids Omega 3 and Omega 6 having an anti-inflammatory effect, meaning that its use allows the intestine to return quickly to normal functioning. This intestinal diet's exceptional palatability and its high-energy contents facilitate the animal's weight recovery during the convalescence period.

INDICATIONS:

- Diarrhoea
- Intestinal inflammation
- Maldigestion – malabsorption
- Typhlitis
- Ileus
- Convalescence
- Intestinal dysbiosis
- Exocrine Pancreatic Insufficiency (EPI)
- Tympanites

CONTRA-INDICATIONS:

- Hepatic encephalopathy

Optimises the functioning of the digestive system ✓

Protects mucus barriers ✓

Contributes towards better digestion and absorption of food ✓

Has a detoxifying effect in case of toxic bacteria being present ✓

Prevents dysbiosis of the intestinal flora ✓

Prevents tympanism ✓

RECOMMENDED DAILY INTAKE:



VET LINE

making it easy



PACKAGE WEIGHT: 1,4 KG



Micro-organisms which remain active in the intestines. With very beneficial effects: helping to balance out bacterial flora & boosting the immune system



Highest quality, stability & freshness guaranteed. This new packaging prevents the oxidation of vitamins and omega-3 and 6 fatty acids



Bronchodilator effect



Increases the body's defences against infectious diseases



Made with the best wild hay and plants with an exceptional palatability, which make voluntary ingestion easier



Adjuvant in the treatment of respiratory system illnesses

Rabbits

Respiratory

VETRR

DESCRIPTION:

Complete feed with medicine plants that helps the prevention of ailments of the breathing system of the rabbits. A complete feed formulated by using medicinal plants and herbs with an advanced ability to improve the respiratory function of rabbits and the pathological processes that accompany hypoxia. The medicinal plants contained in this formula (for example: *Verbascum*, *Tussilago* and *Althaea*) are known for their ability to improve the respiratory system's functions. They work to reduce coughing, inflammation in the respiratory system, pneumonia, bronchitis, allergies and asthma.

The lung capacity of lagomorphs is very small compared to other mammals of their size. Thus, the symptomatology and consequences of obstructions to or inflammation of the respiratory channels is more serious than with other animals. RABBIT RESPIRATORY FORMULA can be used for a longer period of time, as it causes no side effects.

COMPOSITION:

Wild meadow hay, sunflowermeal, wheatmeal, dense-flowered mullein (*verbascum densiflorum*), mauve (*malva mauritiana*), common marshmallow (*althaea officinalis*), coltsfoot (*tussilago farfara*), horehound (*marrubium vulgare*), curly leaf parsley (*petroselinum crispum*), hyssop (*hyssopus officinalis*), barleycorn, alphalpha, natural prebiotics and probiotics, apple (*malus fructus*).

MAIN ACTIVE COMPONENTS:

- DENSE-FLOWERED MULLEIN (*Verbascum densiflorum*)
- MAUVE (*Malva mauritiana*)
- COMMON MARSHMALLOW (*Althaea officinalis*)
- COLTSFOOT (*Tussilago farfara*)
- HOREHOUND (*Marrubium vulgare*)
- CURLY LEAF PARSLEY (*Petroselinum crispum*)
- HYSSOP (*Hyssopus officinalis*)
- APPLE (*Malus fructus*)

INSTRUCTIONS FOR USE :

Administrate according to veterinary prescription. Keep in a cool dry place.

Administrate the first 10 days together with usual feed at 50%, progressively enlarge the ration until we achieve the 100% of the indicated feed.

The treatment should be continued for at least two weeks after the respiratory symptoms disappear. It should be considered that curing respiratory diseases with rabbits is a long and complex process. Where necessary, it is recommended that the diet be combined with an antimicrobial treatment and/or the nebulisation of mucolytic agents, as directed by your vet.

Do not give your pet more food until it has consumed the entire mixture.

ENSURE THAT THE ANIMAL ALWAYS HAS CLEAN FRESH WATER AVAILABLE.

INDICATIONS:

- As a preventive measure, it is recommended to use this product throughout the winter for animals that live outdoors.
- Coughing and sneezing.
- Inflammation and infection of the respiratory tree.
- Pneumonia.
- Allergies and asthma.
- Emphysema and atelectasis.
- Non-specific respiratory failure.

CONTRA-INDICATIONS:

- Pregnancy

Suitable for improving the functioning of the respiratory system ✓

Adjuvant in the treatment of respiratory system illnesses ✓

Bronchodilator ✓

Mucolytic agent ✓

Prevents respiratory illnesses in adverse climate conditions ✓

RECOMMENDED DAILY INTAKE:



VET LINE

making it easy

APPLE



DANDELION
LEAF & FLOWER



HORSETAIL HERB



CHESTNUT



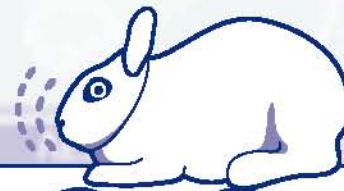
RASPBERRY CANE
& LEAF



AGRIMONY



PACKAGE WEIGHT: 1,4 KG



Micro-organisms which remain active in the intestines. With very beneficial effects: helping to balance out bacterial flora & boosting the immune system



Highest quality, stability & freshness guaranteed. This new packaging prevents the oxidation of vitamins and omega-3 and 6 fatty acids



Coarse wild hay that has an abrasive dental effect



Increases the body's defences against infectious diseases



Made with the best wild hay and plants with an exceptional palatability, which make voluntary ingestion easier



Helps to prevent secondary dysbiosis leading to anorexia due to oral pain



Rabbits Dental

VETRD

DESCRIPTION:

A complete feed which formula is based on medicinal plants that facilitate the recovery of dental pathological processes in rabbits.

The medicinal plants included in the formula are highly palatable, an essential factor for animals with oral complaints. Moreover, the diet has an abrasive dental effect and accelerates the correct erosion of the molars and incisors where they are present. It also facilitates the healing of injuries to the mucus membrane caused by dental incongruity. Its excellent palatability and the food's structure improve appetite and apprehension. It also corrects digestive upsets secondary to the dental complaints.

COMPOSITION:

Wild meadow hay, wheatmeal, alphalfa, apple (*malus fructus*), dandelion leaf (*taraxacum officinale*), horsetail herb, barleycorn, chestnut (*castanea sativa*), raspberry cane (*rubus idaeus*), agrimony (*agrimonia eupatoria*), dandelion flower (*taraxacum officinale*), natural prebiotics and probiotics, raspberry leaf.

MAIN ACTIVE COMPONENTS:

- APPLE (*Malus fructus*)
- DANDELION LEAF (*Taraxacum officinale*)
- HORSETAIL HERB
- CHESTNUT (*Castanea sativa*)
- RASPBERRY CANE (*Rubus idaeus*)
- AGRIMONY (*Agrimonia eupatoria*)
- DANDELION FLOWER (*Taraxacum officinale*)
- RASPBERRY LEAF

INSTRUCTIONS FOR USE :

Administrate according to veterinary prescription. Keep in a cool dry place.

Administrate the first 10 days together with usual feed at 50%, progressively enlarge the ration until we achieve the 100% of the indicated feed.

The absence of side effects allows the product to be provided continually throughout the animal's life. Do not give your pet more food until it has consumed the entire mixture.

If the symptomatology is acute, it is recommended that the analgesic treatment be continued and supplemented with a forced HERBAL CONVALESCENCE DIET. Furthermore, if there is any oral infection, antimicrobial treatment and a forced diet should be initiated.

ENSURE THAT THE ANIMAL ALWAYS HAS CLEAN FRESH WATER AVAILABLE.

INDICATIONS:

- Oral diseases in general
- Removal of incisors, or of other teeth
- Dental filling
- Malocclusion of the teeth
- Oral wounds and sores

CONTRA-INDICATIONS:

- Pregnancy
- Lactation
- Do not provide to animals < 3 months

Dental abrasive ✓

Excellent palatability ✓

Strengthens the immune system ✓

Prevents secondary dysbiosis leading to anorexia due to oral pain ✓

RECOMMENDED DAILY INTAKE:



VET LINE

making it easy

CHAMOMILLE
& GERMAN
CHAMOMILLE



ALOE VERA



BIRCH



COMMON NETTLE



SAINT JOHN'S
WORT



CALENDULA



DRIED CARROT



BLADDERWRACK



PACKAGE WEIGHT: 1,4 KG



Micro-organisms which remain active in the intestines. With very beneficial effects: helping to balance out bacterial flora & boosting the immune system



Highest quality, stability & freshness guaranteed. This new packaging prevents the oxidation of vitamins and omega-3 and 6 fatty acids



Made with plants that have an insect-and external parasite repelling effect



Increases the body's defences against infectious diseases



Especially developed for long-hair breeds



Natural source of essential fatty acids

Rabbits

Skin Support

VETRSS

DESCRIPTION:

Complete feed with medicine plants indicated for the skin and annexed skin health. It is appropriate for pathological symptoms affecting the skin and skin appendages.

SKIN SUPPORT is a mixture of medicinal plants that facilitates the maintenance of a shiny coat and good dermatological health. It improves the body's metabolic routes and increases the skin's resistance to external factors, such as cold, moist and heat. Furthermore, it acts as a natural external anti-parasitic and insect repellent. The medicinal plants contained in this formula (for example: *Galium* and *Betula*) are used for their ability to positively influence the course of skin diseases, such as: eczema, hair loss, skin inflammation, dandruff and allergies.

It strengthens body's immune system and improves the process of hair change. The long-chain Omega-3 fatty acids modulate and control cutaneous inflammatory reactions. The antioxidant synergy complex reduces oxidative stress and counters the effects of free radicals. Due to its natural character, the mixture is appropriate for long-term treatments without the appearance of any side effects.

COMPOSITION:

Wild meadow hay, wheatmeal, barleycom, sunflowermeal, german chamomile (*matricaria recutita l.*), aloe vera (*aloe barbadensis*), birch (*betula pendula roth*), alphas, comon nettle (*urtica dioica l.*), saint john's wort (*galium verum l.*), calendula (*calendula officinalis*), natural prebiotics and probiotics, dried carrot (*daucus carota*), chamomile, bladderwrack (*focus vesiculosus*).

MAIN ACTIVE COMPONENTS:

- GERMAN CHAMOMILE (*Matricaria recutita L.*)
- ALOE VERA (*Aloe barbadensis*)
- BIRCH (*Betula pendula Roth*)
- COMMON NETTLE (*Urtica dioica L.*)
- SAINT JOHN'S WORT (*Galium verum L.*)
- CALENDULA (*Calendula officinalis*)
- DRIED CARROT (*Daucus carota*)
- CHAMOMILE
- BLADDERWRACK (*Focus vesiculosus*)

INSTRUCTIONS FOR USE :

Administrate according to veterinary prescription. Keep in a cool dry place.

Administrate the first 10 days together with usual feed at 50%, progressively enlarge the ration until we achieve the 100% of the indicated feed.

From the time cutaneous disorders appear, an initial treatment of 2 months is recommended in order to obtain visible results. In the case of chronic disorders, the dietary cutaneous treatment can be provided for life. The synergetic action of the natural medicinal herbs in SKIN SUPPORT strengthens the skin's natural defences and supports cutaneous healing.

Do not give your pet more food until it has consumed the entire mixture.

ENSURE THAT THE ANIMAL ALWAYS HAS CLEAN FRESH WATER AVAILABLE.

INDICATIONS:

- Atopic dermatitis
- Ichthyosis
- Support of skin function (dermatosis, hair loss)
- Pyoderma
- Skin lacerations
- Symptoms in relation to external parasitic diseases, such as mange, fleas and ticks
- Ringworm or other fungal infections of the skin or appendages
- External otitis
- Life-long treatment for species with long or particular hair, such as angora or rex breeds
- During moulting

CONTRA-INDICATIONS:

- Pregnancy
- Breast feeding
- Hyperlipidaemia
- Pancreatitis, or with a history of pancreatitis episodes

Improves the skin's resistance to adverse external factors ✓

Improves the metabolic routes ✓

Assists in the renewal process ✓

Improves the shine of your pet's coat ✓

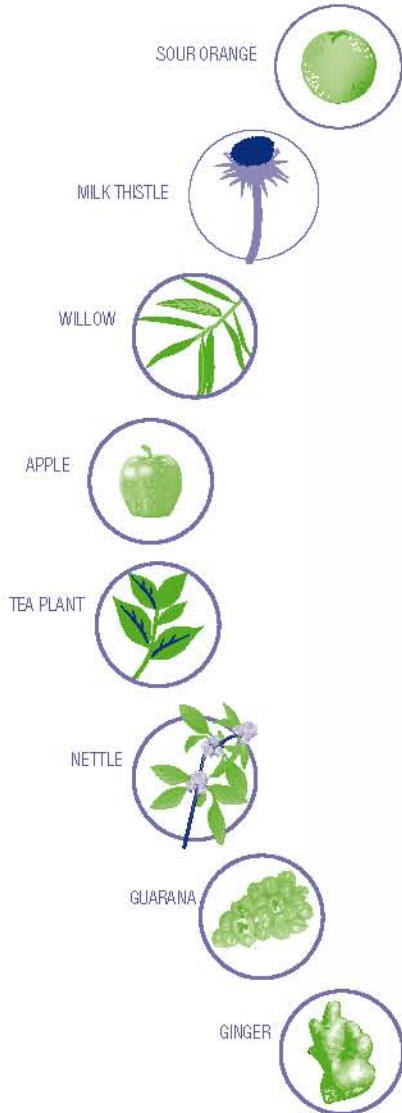
Strengthens the immune system ✓

RECOMMENDED DAILY INTAKE:



VET LINE

making it easy



**PACKAGE WEIGHT: 1,36 KG.
3 LB**



Micro-organisms which remain active in the intestines. With very beneficial effects: helping to balance out bacterial flora & boosting the immune system



Highest quality, stability & freshness guaranteed. This new packaging prevent the oxidisation of vitamins and omega-3 and fatty acids



Helps to control overweight and to remove the stored toxins



Coarse wild hay that has an abrasive dental effect



Increases the body's defences against infectious diseases



Natural source of essential fatty acids

Rabbits Obesity

VETRO

DESCRIPTION:

Complete feed formulated with medicine plants and wild meadow hay that helps reduce weight of the obese animals or those beginning to become obese.

Its formula includes a great variety of plants with beneficial effects to reduce the excess of fat and can also collaborate in the dental wear, for example (*Citrus aurantium*, *Mali fructus* or *Paulina cupana*).

The bitter orange (and bitter orange juice) are used in a supplement diet, as an obesity control help and a suppressor of appetite.

The apple has diuretic and depurative effects helping to eliminate the body liquids and being more adequate in obesity matters due to its content in cystine and arginine, and also malic acid, it results to be very appropriate to remove the toxins that are stored in the body.

The guarana is used to treat diarrhea, decrease fatigue, decrease hunger and helps in arthritis.

The formula includes a great variety of plants with beneficial effects to reduce fat excess and can also collaborate in the dental wear. Its goods taste and the food structure improves the appetite of these fiber feeds. Helps to correct the secondary digestive alterations of inadequate diets with an excess of carbohydrates and energy.

COMPOSITION:

Hay, wheat bran, treated straw, dehydrated alfalfa, sour orange (*Citrus Aurantium*), milk thistle (*Silybum marianum*), willow (*Salix Alba*), dried apple (*Mali Fructus*), tea plant (*Camellia Sinensis*), nettle (*Urtica Dioica*), wheat, cane molasses, beetrot pulp, integral sunflower, carbonate of lime, soya oil, guarana (*Paulina cupana*), ginger (*Zingiber officinale*), monocalcium phosphate, sodium chloride, choline chloride, natural prebiotics and probiotics, whey.

MAIN ACTIVE COMPONENTS:

- SOUR ORANGE (*Citrus Aurantium*)
- MILK THISTLE (*Silybum marianum*)
- WILLOW (*Salix Alba*)
- DRIED APPLE (*Mali Fructus*)
- TEA PLANT (*Camellia Sinensis*)
- NETTLE (*Urtica Dioica*)
- GUARANA (*Paulina cupana*)
- GINGER (*Zingiber officinale*)

INSTRUCTIONS FOR USE :

Administrate according to veterinary prescription. Keep in a cool dry place.

Administrate the first 10 days together with usual feed at 50%, progressively enlarge the ration until we achieve the 100% of the indicated feed.

Due to the lack of adverse symptoms, in animals that it is required, the feed can be extended during all the animal's life.

Do not add new feed to the animal until it has consumed all the mixture totally.

LEAVE CLEAN AND FRESH WATER AT COMPLETE DISPOSAL.

INDICATIONS:

- Hyperlipidemia
- Overweight
- Obesity
- Hypercholesterolemia
- Need to increase the fiber in the ration

CONTRA-INDICATIONS:

- Pregnant or lactating animals
- Do not administrate to animals under 9 months

Helps to reduce fat ✓

Helps to remove the stored toxins ✓

Dental abrasive ✓

Potentiate the immune system ✓

RECOMMENDED DAILY INTAKE:



VET LINE

making it easy

MILKTHISTLE



ECHINACEA



DRIED CARROT



**PACKAGE WEIGHT: 1,36 KG.
3 LB**



Micro-organisms which remain active in the intestines. With very beneficial effects: helping to balance out bacterial flora & boosting the immune system



Highest quality, stability & freshness guaranteed. This new packaging prevent the oxidation of vitamins and omega-3 and fatty acids



Assists the elimination of harmful substances from animals' bodies



Increases the body's defences against infectious diseases



Works with the organ-metabolic system



Formula with an organ-purifying and -detoxifying effect

Rabbits Regular

VETREG

DESCRIPTION:

Complete and well balanced feed for the correct nutritional diet of the rabbit pet. Its formula includes a great variety of beneficial plants with physiology effects for the herbivores.

Its formula includes a great variety of plants with beneficial effects for the physiology of the herbivores, por ejemplo: Carrot, *Silybum marianum*, *Echinacea*. The carrot is a rich vegetable in carotenes, these are transformed by the liver into vitamin A, very favorable for the health of the rabbits as this vegetable has antioxidant properties.

The milk thistle is beneficial for the animal health due to its many medicine features, for example helps to reduce the cholesterol levels, it is used as a multivitamin, avoids hepatic and renal damage due to some antiviral, antibiotic and anti-inflammatory medicines, helps in the glucose normalization (reduces sugar in blood), etc., for this it is advisable to use as part of a daily diet.

Also the formula and the medicine plants included can help to prevent the most common pathologies.

COMPOSITION:

Hay, bran, dehydrated carrot, integral sunflower, treated straw, beetroot pulp, dehydrated alfalfa, cane molasses, milk thistle (*Silybum marianum*), echinacea (*Echinacea*), soya oil, sodium chloride, natural prebiotics and probiotics, carbonate of lime.

MAIN ACTIVE COMPONENTS:

- Dehydrated carrot
- Milk thistle (*Silybum marianum*)
- Echinacea (*Echinacea*)

INSTRUCTIONS FOR USE :

Dispense according to veterinary prescription. Keep in cool and dry place.

Administrate the first 10 days together with usual feed at 50%, progressively enlarge the ration until we achieve the 100% of the indicated feed.

The nutritional treatment is recommended for lifetime in healthy rabbits after the age of 6 or 12 months depending on the race.

Do not provide new feed until the animal has totally consumed the mix.

LEAVE CLEAN AND FRESH WATER AT FREE DISPOSAL.

INDICATIONS:

- All type of healthy adult rabbits

CONTRA-INDICATIONS:

- Pregnancy
- Lactation
- Animals under 6 months

Daily intake of healthy feed ✓

Helps to remove the toxins ✓

Dental abrasive ✓

Potentiate the immune system ✓

RECOMMENDED DAILY INTAKE:



VET LINE

making it easy



PACKAGE WEIGHT: 125 G



Micro-organisms which remain active in the intestines. With very beneficial effects: helping to balance out bacterial flora & boosting the immune system



Highest quality, stability & freshness guaranteed. This new packaging prevent the oxidisation of vitamins and omega-3 and fatty acids



Contributes towards better digestion and absorption of food



Improves the body's defences against infectious diseases



Made with top-quality raw materials, that have a prebiotic effect



Prevents dysbiosis of the intestinal microflora and fights against tympanism

Rabbits & Rodents

Herbal Convalescence

VETCONV | VETCONV2

DESCRIPTION:

HERBAL CONVALESCENTS (VETCONV): Powder diet, based on medicinal herbs and plants beneficial to herbivorous animals suffering anorexia or weakened by illness. **HERBAL CONVALESCENTS EXTRA FINE (VETCONV2):** Syringe Feeding diet, based on medicinal herbs and plants beneficial to herbivorous animals suffering anorexia or are weak by illness.

A complete food based on medicinal plants that strengthen and optimise organic and vital functions in herbivorous animals. This mixture contains all of the essential nutrients required for a complete diet. Improves intestinal function and strengthens the organism's health. It supports the normalisation and re-seeding of the intestinal microflora.

The medicinal plants included in the formula (for example: *Centaurium*, *Chlorella* and *Hypesicum*) have an anti-inflammatory effect and act as prebiotics, detoxifiers and strengthen the immune system. They protect the mucus membrane of the stomach and intestines, reduce flatulence and help the body to absorb the nutritive substances of digested food. The use of this natural product is recommended for all types of digestive problems. It also improves voluntary consumption of food. It can be used until your pet starts ingesting food on its own once more.

COMPOSITION:

Wild meadow hay, wheatmeal, fennel (*Foeniculum vulgare*), lemon balm (*Melissa officinalis*), caraway (*Carum carvi*), fenugreek (*Trigonella foenum-graecum*), milk thistle (*Silybum marianum*), chlorella (*Chlorella sp.*), spotted thistle (*Cnicus benedictus*), linseed (*Linum usitatissimum*), aniseed (*Pimpinella anisum*), saint john's wort (*Hypericum perforatum*), european centaury (*Centaurium erythraea Rafn*), goldenrod, oregano, garlic (*Allium sativum*), natural prebiotics and probiotics.

MAIN ACTIVE COMPONENTS:

- FENNEL (*Foeniculum vulgare*)
- LEMON BALM (*Melissa officinalis*)
- CARAWAY (*Carum carvi*)
- FENUGREEK (*Trigonella foenum-graecum*)
- MILK THISTLE (*Silybum marianum*)
- CHLORELLA (*Chlorella sp.*)
- SPOTTED THISTLE (*Cnicus benedictus*)
- LINSEED (*Linum usitatissimum*)
- ANISEED (*Pimpinella anisum*)
- SAINT JOHN'S WORT (*Hypericum perforatum*)
- EUROPEAN CENTAURY (*Centaurium erythraea Rafn*)
- GOLDENROD

- GARLIC (*Allium sativum*)

INSTRUCTIONS FOR USE:

Dispense according to veterinary prescription. Keep in cool and dry place.

Administrate the first 10 days together with usual feed at 50%, progressively enlarge the ration until we achieve the 100% of the indicated feed.

In case of acute illness, the dietary treatment should last for at least 30 days, which takes into account the period necessary to regenerate the hair on the lining (what is this ?) of the intestine and allow the lagomorph's intestinal flora complex to recover.

Do not give your pet more food until it has consumed the entire mixture. ENSURE THAT THE ANIMAL ALWAYS HAS CLEAN FRESH WATER AVAILABLE.

In case of chronic illness, the dietary treatment can last for life, depending on the advice of your vet. The formula's highly digestible ingredients compensate for the damaged intestine's reduced enzymatic activity, thus guaranteeing optimal absorption of nutrients. The formula contains probiotics, prebiotics and essential Omega 3 and Omega 6 fatty acids having an anti-inflammatory effect, meaning that its use allows the intestine to return quickly to normal functioning. The intestinal diet's exceptional palatability and its high-energy contents facilitate the animal's weight recovery during the convalescence period.

INDICATIONS:

- Processes that cause starvation in herbivores
- Diarrhoea
- Weakness or deficiencies
- Intestinal inflammation
- Anorexia
- Maldigestion/malabsorption
- Extreme weight loss
- Typhlitis
- Ileus
- Convalescence
- Intestinal dysbiosis
- Exocrine Pancreatic Insufficiency (EPI)

CONTRA-INDICATIONS:

- Hepatic encephalopathy

Optimises the functioning of the digestive system ✓

Protects mucus barriers ✓

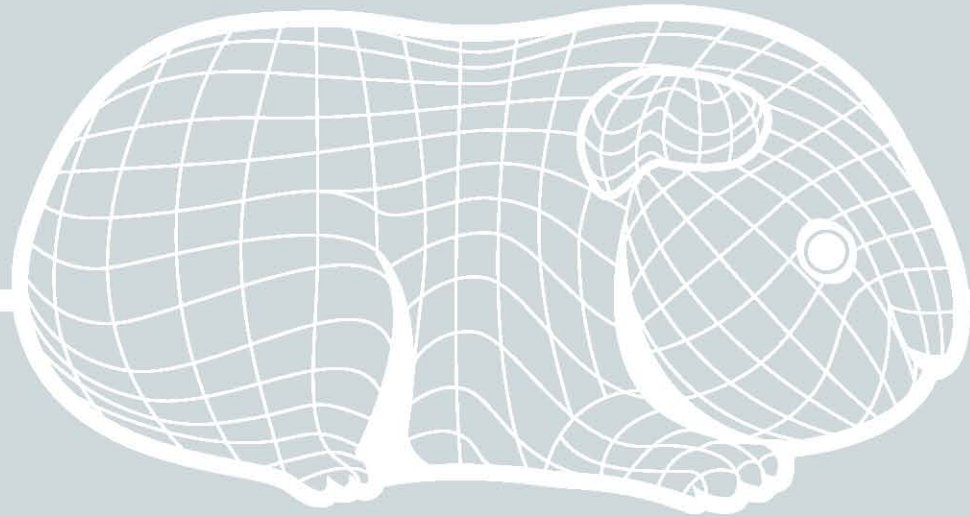
Contributes towards better digestion and absorption of food ✓

Has a detoxifying effect on toxic bacteria being present ✓

Prevents dysbiosis of the intestinal flora ✓

Prevents tymanism ✓



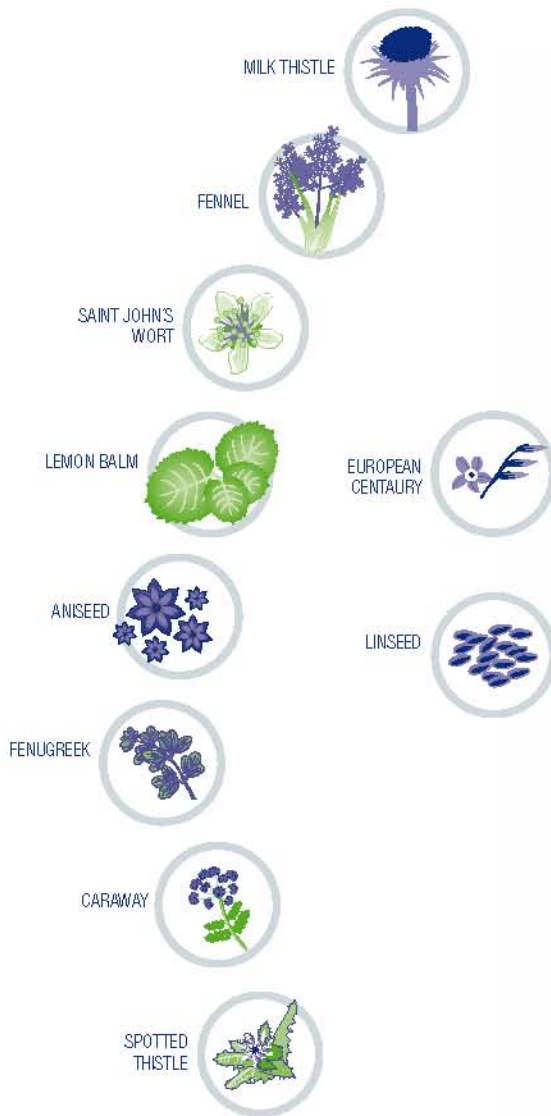


Guinea Pigs



VET LINE

making it easy



PACKAGE WEIGHT: 1,4 KG



Micro-organisms which remain active in the intestines. With very beneficial effects: helping to balance out bacterial flora & boosting the immune system



Highest quality, stability & freshness guaranteed. This new packaging prevents the oxidation of vitamins and omega-3 and 6 fatty acids



Contributes towards better digestion and absorption of food



Improves the body's defences against infectious diseases



Made with top-quality raw materials, that have a prebiotic effect



Helps to prevent dysbiosis of the intestinal microflora and fights against tympanism

Guinea Pigs Intestinal

VETGI

DESCRIPTION:

Complete and well balanced feed with medicine plants that help to reinforce and improve the digestive functions of the guinea pig.

A complete food based on medicinal plants that strengthen and improve the digestive function of guinea pigs. The intestinal function is the key for a body's health. This formula improves the intestinal function and strengthens the organism's health.

The medicinal plants contained in this formula (for example: *Centaurium and Hypesicum*) have an anti-inflammatory effect and act as detoxifiers. They protect the mucus membrane of the intestinal structure complex and the stomach of these very special animals. The diet reduces flatulence and helps the body absorb the nutritive substances of the food. The use of this natural product is recommended for all types of digestive problems. It will also improve how your guinea pig's eating habits because of its wonderful smell and its good palatability. It can be provided for continued periods of time without causing any side effects.

COMPOSITION:

Wild meadow hay, sunflowermeal, wheatmeal, barley-corn, alphas, milk thistle (*Silybum marianum*), fennel (*Foeniculum vulgare*), saint john's wort (*Hypericum perforatum*), lemon balm (*Melissa officinalis*), aniseed (*Pimpinella anisum*), fenugreek (*Trigonella foenum-graecum*), caraway (*Carum carvi L.*), natural prebiotics and probiotics, spotted thistle (*Cnicus benedictus L.*), european centaury (*Centaurium erythraea Rafn*), linseed (*Linum usitatissimum*).

MAIN ACTIVE COMPONENTS:

- MILK THISTLE (*Silybum marianum*)
- FENNEL (*Foeniculum vulgare*)
- SAINT JOHN'S WORT (*Hypericum perforatum*)
- LEMON BALM (*Melissa officinalis*)
- ANISEED (*Pimpinella anisum*)
- FENUGREEK (*Trigonella foenum-graecum*)
- CARAWAY (*Carum carvi L.*)
- SPOTTED THISTLE (*Cnicus benedictus L.*)
- EUROPEAN CENTAURY (*Centaurium erythraea Rafn*)
- LINSEED (*Linum usitatissimum*)

INSTRUCTIONS FOR USE :

Dispense according to veterinary prescription. Keep in cool and dry place.

Administrate the first 10 days together with usual feed at 50%, progressively enlarge the ration until we achieve the 100% of the indicated feed.

In case of acute illness, the dietary treatment should last for at least 40 days in order to regenerate the hair on the lining of the intestine and allow the guinea pig's complex intestinal flora to recover.

Do not give your pet more food until it has consumed the entire mixture.

ENSURE THAT THE ANIMAL ALWAYS HAS CLEAN FRESH WATER AVAILABLE.

When the illness is chronic or in the case of recurrent intestinal disorders, the dietary treatment can last for life, depending on the advice and supervision of your vet. The formula's highly digestible ingredients compensate for the damaged intestine's reduced enzymatic activity, thus guaranteeing optimal absorption of nutrients. Many of the ingredients have prebiotic effects, meaning that the combined use of prebiotics and probiotics along with the beneficial anti-inflammatory effects of the Omega 3 and Omega 6 essential fatty acids lead to the rapid recovery of the intestinal function. The intestinal diet's exceptional palatability and its high-energy contents facilitate the animal's weight recovery during the convalescence period.

INDICATIONS:

- Diarrhoea
- Intestinal inflammation
- Maldigestion – malabsorption
- Typhlitis
- Ileus
- Convalescence
- Intestinal dysbiosis
- Exocrine Pancreatic Insufficiency (EPI)

CONTRA-INDICATIONS:

- Hepatic encephalopathy

Optimises the functioning of the digestive system ✓

Protects mucus barriers ✓

Contributes towards better digestion and absorption of food ✓

Has a detoxifying effect on toxic bacteria being present ✓

Prevents dysbiosis of the intestinal flora ✓

Prevents tympanism ✓

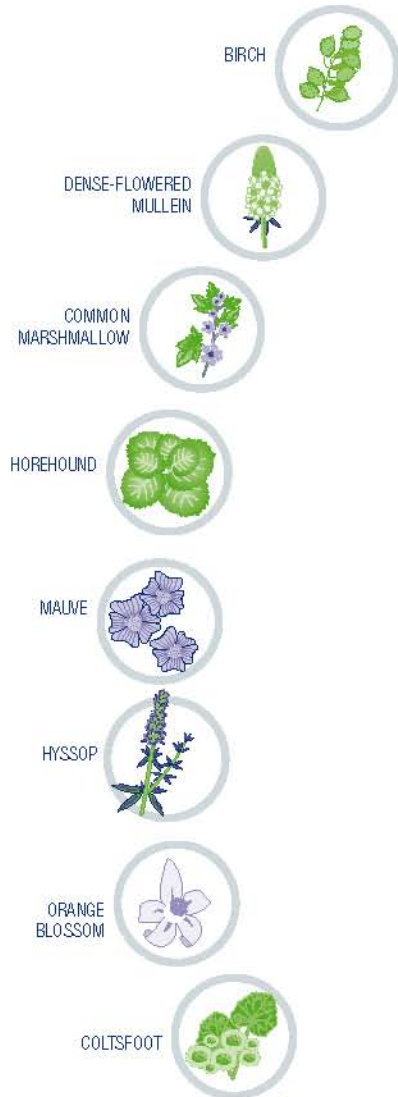
Strengthens the defences ✓

RECOMMENDED DAILY INTAKE:



VET LINE

making it easy



PACKAGE WEIGHT: 1,4 KG



Micro-organisms which remain active in the intestines. With very beneficial effects: helping to balance out bacterial flora & boosting the immune system



Highest quality, stability & freshness guaranteed. This new packaging prevents the oxidation of vitamins and omega-3 and 6 fatty acids



Bronchodilator effect



Increases the body's defences against infectious diseases



Made with the best wild hay and plants, with an exceptional palatability, which make voluntary ingestion easier



Adjuvant in the treatment of respiratory system illnesses

Guinea Pigs Respiratory

VETGR

DESCRIPTION:

Complete and well balanced feed with medicine plants that help against the breathing problems of the guinea pigs.

When the respiratory system is disrupted, the organism suffers from a lack of oxygen. The medicinal plants contained in the formula (for example: *Verbascum*, *Tussilago* and *Althaea*) are known for their ability to improve the respiratory system's functions. They work to reduce coughing, inflammation in the respiratory system, pneumonia, bronchitis, allergies and asthma. Given that the lung capacity of small exotic herbivores is very low, the problems affecting this organ can produce serious organic hypoxia symptoms.

The plants included in this formula help reduce coughing, inflammation of the respiratory system, pneumonia, bronchitis, allergies and asthma, and improve the perfusion of tissue and recovery from the process. The GUINEA PIG RESPIRATORY formula can be used for a longer period of time without causing any adverse side effects.

COMPOSITION:

Wild meadow hay, sunflowermeal, wheatmeal, common marshmallow (*althaea officinalis*), horehound (*marrubium vulgare*), coltsfoot (*tussilago farfara*), orange blossom, mauve (*maiva mauritiana*), hyssop (*hyssopus officinalis*), barleycorn, natural prebiotics and probiotics, alphas, dense-flowered mullein (*verbascum densiflorum*), birch (*betula pendula roth*).

MAIN ACTIVE COMPONENTS:

- COMMON MARSHMALLOW (*Althaea officinalis*)
- HOREHOUND (*Marrubium vulgare*)
- COLTSFOOT (*Tussilago farfara*)
- ORANGE BLOSSOM
- MAUVE (*Maiva mauritiana*)
- HYSSOP (*Hyssopus officinalis*)
- DENSE-FLOWERED MULLEIN (*Verbascum densiflorum*)
- BIRCH (*Betula pendula Roth*)

INSTRUCTIONS FOR USE:

Dispense according to veterinary prescription. Keep in cool and dry place.

Administrate the first 10 days together with usual feed at 50%, progressively enlarge the ration until we achieve the 100% of the indicated feed.

The treatment should be continued for at least two weeks after the respiratory symptoms disappear. It should be considered that curing respiratory difficulties with guinea pigs is a long and complex process. Where necessary, it is recommended that the diet be combined with an antimicrobial treatment and vitamin C, as directed by your vet, in conjunction with the nebulisation of mucolytic drugs. Do not give your pet more food until it has consumed the entire mixture.

ENSURE THAT THE ANIMAL ALWAYS HAS CLEAN FRESH WATER AVAILABLE.

INDICATIONS:

- As a preventive measure, it is recommended to use this product throughout the winter for animals that live outdoors.
- Coughing and sneezing.
- Inflammation and infection of the respiratory tree.
- Pneumonia.
- Allergies and asthma.
- Emphysema and atelectasis.
- Non-specific respiratory failure.

CONTRA-INDICATIONS:

- Due to lack of side-effects caused by the formula, the use of this food is recommended at all times except during pregnancy.

Beneficial to improving the functioning of the respiratory system ✓

Adjuvant in the treatment of respiratory system illnesses ✓

Bronchodilator ✓

Mucolytic agent ✓

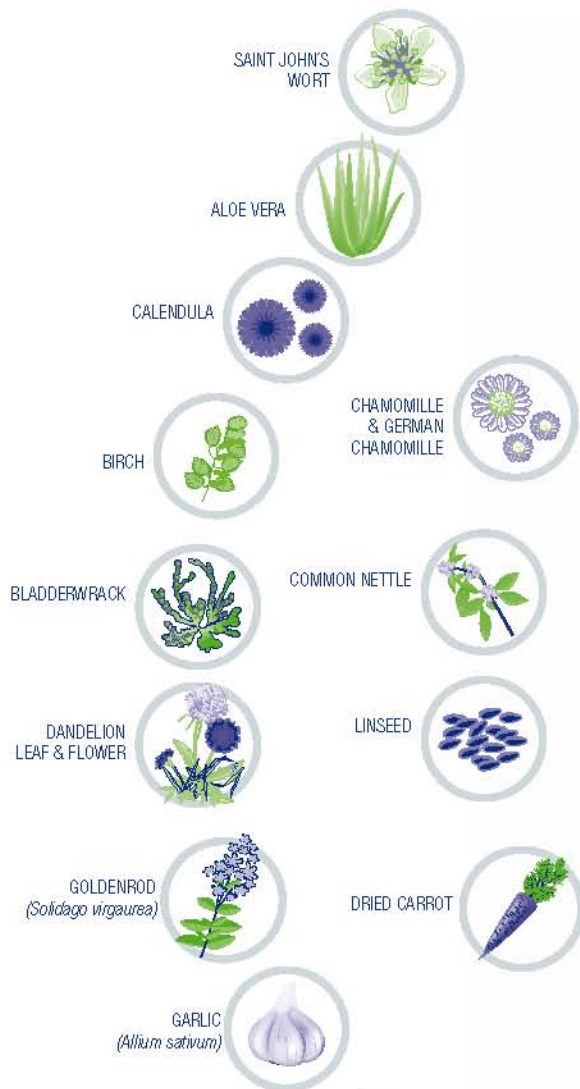
Helps against respiratory illnesses in adverse climate conditions ✓

RECOMMENDED DAILY FEEDING:



VET LINE

making it easy



PACKAGE WEIGHT: 1,4 KG



Micro-organisms which remain active in the intestines. With very beneficial effects: helping to balance out bacterial flora & boosting the immune system



Highest quality, stability & freshness guaranteed. This new packaging prevents the oxidation of vitamins and omega-3 and 6 fatty acids



Made with plants that have an insect and external parasite repelling effect



Increases the body's defences against infectious diseases



Especially designed for long-hair breeds



Natural source of essential fatty acids

Guinea Pigs Skin Support

VETGSS

DESCRIPTION:

Complete and well balanced feed with medicine plants indicate for the skin health of the guinea pigs. SKIN SUPPORT is suitable for those pathological symptoms affecting the skin and skin appendages.

It is a mixture of medicinal plants that facilitate the maintenance of a shiny coat and good dermatological health. It improves the body's metabolic routes and increases the skin's resistance to external factors, such as cold, moist and heat. Guinea pigs are extremely sensitive to skin and fur disorders. This product acts as a natural external anti-parasitic and insect repellent. The medicinal plants contained in the formula (for example: *Galium and Betula*) are used for their curative properties against skin illnesses, such as eczema, hair loss, skin inflammation, dandruff and allergies.

They strengthen the body's immune system and improve the coat renewal process. The long-chain Omega-3 fatty acids modulate and control cutaneous inflammatory reactions. The antioxidant synergy complex reduces oxidative stress and fights the effects of free radicals. Due to its natural character, the mixture is suitable for long-term treatments without the appearance of any side effects.

COMPOSITION:

Wild meadow hay, wheatmeal, alphas, saint john's wort (*galium verum*), barleycorn, sunflowermeal, aloe vera (*aloe barbadensis*), calendula (*calendula officinalis*), german chamomile, birch (*betula pendula*), bladderwrack (*focus vesiculosus*), dandelion leaf (*taraxacum officinale*), goldenrod (*solidago virgaurea*), garlic (*allium sativum*), common nettle (*urtica dioica*), natural prebiotics and probiotics, linseed (*linum usitatissimum*), dried carrot (*daucus carota*).

MAIN ACTIVE COMPONENTS:

- SAINT JOHN'S WORT (*Galium verum*)
- ALOE VERA (*Aloe barbadensis*)
- CALENDULA (*Calendula officinalis*)
- GERMAN CHAMOMILE
- BIRCH (*Betula pendula*)
- BLADDERWRACK (*Focus vesiculosus*)
- DANDELION LEAF (*Taraxacum officinale*)
- GOLDENROD (*Solidago virgaurea*)
- GARLIC (*Allium sativum*)
- COMMON NETTLE (*Urtica dioica*)
- LINSEED (*Linum usitatissimum*)

■ DRIED CARROT (*Daucus carota*)

INSTRUCTIONS FOR USE :

Dispense according to veterinary prescription. Keep in cool and dry place.

Administrate the first 10 days together with usual feed at 50%, progressively enlarge the ration until we achieve the 100% of the indicated feed.

To achieve visible results, an initial 2-month treatment after skin disorders have arisen is recommended. This dietary treatment for the skin can be provided throughout the life of the animal in the case of chronic diseases. The synergetic action of the natural medicinal herbs contained in SKIN SUPPORT (Curcumina, Aloe Vera, Vitamin C and Taurina) increases the skin's natural defences and helps the skin to heal.

Do not give your pet more food until it has consumed the entire mixture.

ENSURE THAT THE ANIMAL ALWAYS HAS CLEAN FRESH WATER AVAILABLE.

INDICATIONS:

- Atopic dermatitis
- Ichthyosis
- Support of skin function (dermatosis, hair loss)
- Pyoderma
- Skin lacerations
- Symptoms in relation to external parasitic diseases, such as mange, fleas and ticks
- Ringworm or other fungal infections of the skin or appendages
- External otitis
- Life-long treatment for species with long or particular hair, such as angora or rex breeds
- During moulting

CONTRA-INDICATIONS:

- Pregnancy
- Breast feeding
- Hyperlipidaemia
- Pancreatitis, or with a history of pancreatitis episodes

Improves the skin's resistance to adverse external factors ✓

Improves the metabolic routes ✓

Assists in the renewal process ✓

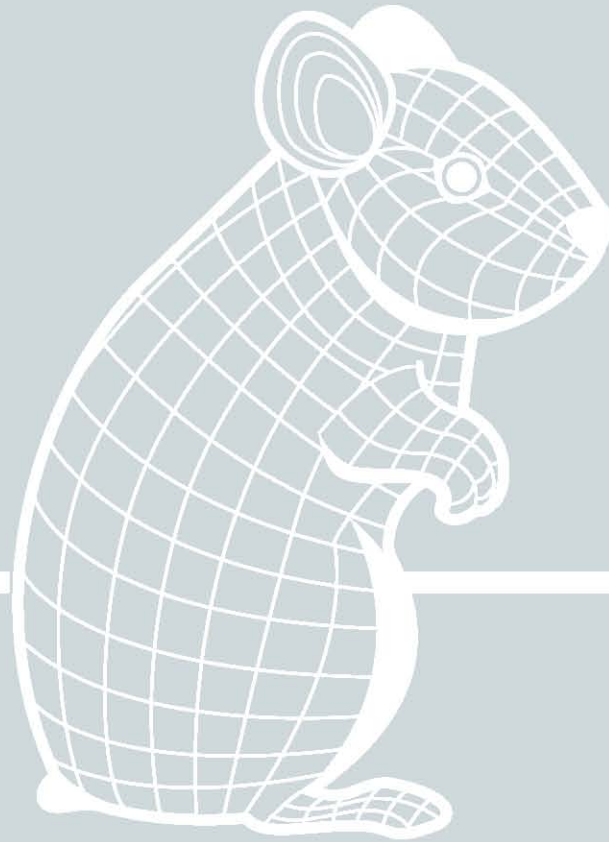
Improves the shine of your pet's coat ✓

Strengthens the immune system ✓

RECOMMENDED DAILY INTAKE:





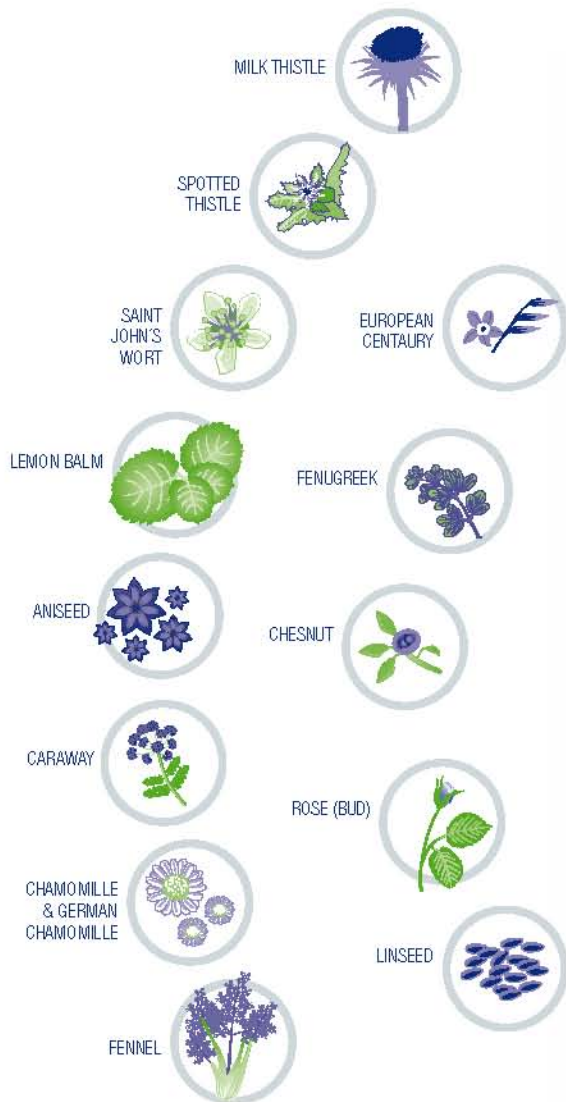


Small Rodents



VET LINE

making it easy



PACKAGE WEIGHT: 1,4 KG



Micro-organisms which remain active in the intestines. With very beneficial effects: helping to balance out bacterial flora & boosting the immune system



Highest quality, stability & freshness guaranteed. This new packaging prevents the oxidation of vitamins and omega-3 and 6 fatty acids



Contributes towards better digestion and absorption of food



Improves the body's defences against infectious diseases



Made with top-quality raw materials, that have a prebiotic effect



Prevents dysbiosis of the intestinal microflora and fights against tympanism

Small Rodents Intestinal

VETS1

DESCRIPTION:

Complete and well balanced feed with medicine plants that help to reinforce and improve the digestive functions of the small rodents. The intestinal function is the key for a body's health.

This formula improves the intestinal function and strengthens the organism's health. The medicinal plants contained in our formula (for example: *Centaureum* and *Hypesicum*) have an anti-inflammatory effect and act as detoxifiers. It protects the mucus membrane of the intestinal structure complex and the stomach of these very special animals.

They reduce flatulence and help the body absorb the nutritive substances of the food. The use of this natural product is recommended for all types of digestive problems. It will also improve your pet's eating behaviour because of its wonderful smell and palatability.

COMPOSITION:

Cereals, wild meadow hay, wheatmeal, soya bean, sunflowermeal, barleycorn, milk thistle, spotted thistle (*Cnicus benedictus*), saint john's wort (*Hypericum perforatum*), lemon balm (*Melissa officinalis*), aniseed (*Pimpinella anisum*), caraway (*Carum carvi*), german chamomile, fennel (*Foeniculum vulgare*), european centaury (*Centaureum erythraea*), fenugreek (*Trigonella foenum-graecum*), chestnut (*Castanea sativa miller*), natural prebiotics and probiotics, rose (bud), linseed (*Linum usitatissimum*).

MAIN ACTIVE COMPONENTS:

- MILK THISTLE
- SPOTTED THISTLE (*Cnicus benedictus*)
- SAINT JOHN'S WORT (*Hypericum perforatum*)
- LEMON BALM (*Melissa officinalis*)
- ANISEED (*Pimpinella anisum*)
- CARAWAY (*Carum carvi*)
- GERMAN CHAMOMILE
- FENNEL (*Foeniculum vulgare*)
- EUROPEAN CENTAURY (*Centaureum erythraea*)
- FENUGREEK (*Trigonella foenum-graecum*)
- CHESTNUT (*Castanea sativa Miller*)
- ROSE (BUD)
- LINSEED (*Linum usitatissimum*)

INSTRUCTIONS FOR USE :

Dispense according to veterinary prescription. Keep in cool and dry place.

Administrate the first 10 days together with usual feed at 50%, progressively enlarge the ration until we achieve the 100% of the indicated feed.

This dietary treatment should be provided for a minimum of 20 days in the case of acute disease, which takes into account the exact amount of time necessary for the intestinal villi to regenerate and the intestinal floral system of small rodents to recover. For chronic diseases, the treatment may continue for life, though always in compliance with your veterinarian's advice.

The highly digestible ingredients compensate for the intestine's reduced enzymatic activity and the damaged digestive flora. The prebiotics facilitate the recolonisation of the physiological intestinal flora, thus guaranteeing optimal ingestion of nutrients. In situations whereby the animal is extremely weak, combine the diet with HERBAL CONVALESCENCE.

The combined use of pre- and probiotics along with the beneficial anti-inflammatory effect of the Omega 3 and Omega 6 essential fatty acids lead to rapid recovery of the intestinal function. The intestinal diet's exceptional palatability and its high-energy contents facilitate the animal's weight recovery during the convalescence period. Do not give your pet more food until it has consumed the entire mixture.

ENSURE THAT THE ANIMAL ALWAYS HAS CLEAN FRESH WATER AVAILABLE.

INDICATIONS:

- Diarrhoea
- Intestinal inflammation
- Maldigestion/malabsorption
- Typhlitis
- Ileus
- Convalescence
- Intestinal dysbiosis
- Exocrine Pancreatic Insufficiency (EPI)
- Tympanites

CONTRA-INDICATIONS :

- Hepatic encephalopathy

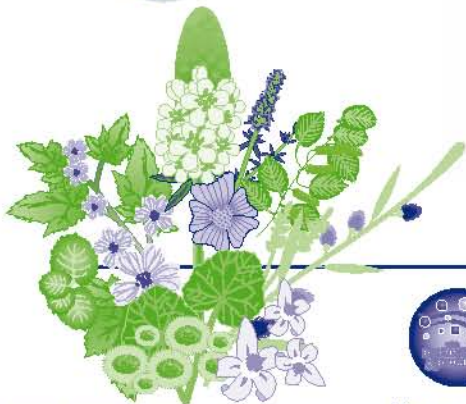
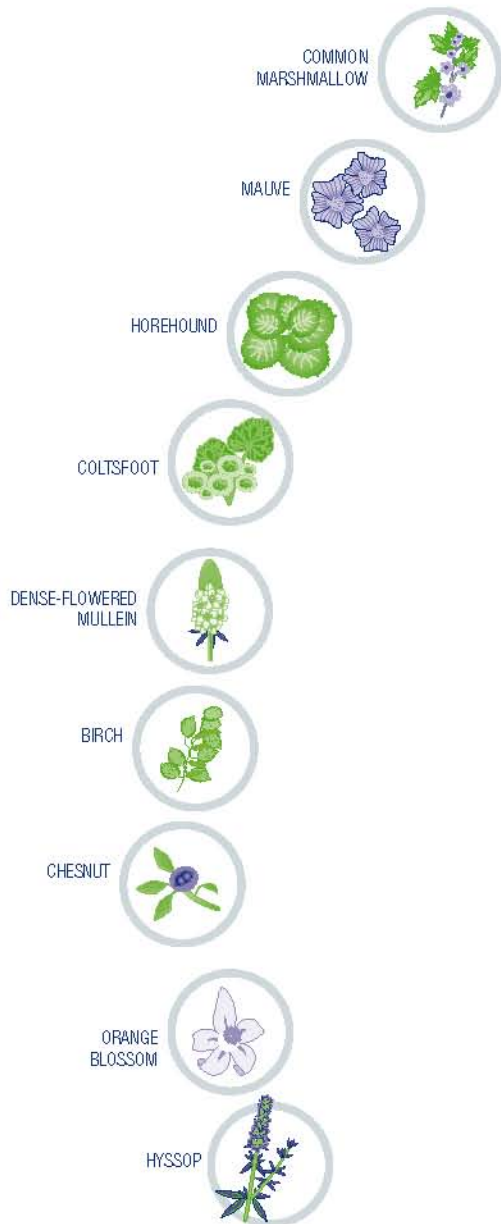
- Optimises the digestive system's processes ✓*
- Protects mucus barriers ✓*
- Contributes towards better digestion and absorption of food ✓*
- Has a detoxifying effect on toxic bacteria being present ✓*
- Prevents dysbiosis ✓*
- Reduces tympanism ✓*

RECOMMENDED DAILY INTAKE:

WEIGHT	HAMSTER	SQUIRREL	RAT	CHINCHILLA
10 g	3 g	-	-	-
30 g	5 g	-	-	-
50 g a 100 g	10 g	10 g	-	-
100 g a 200 g	-	15 g	-	-
200 g a 500 g	-	20 g	-	-
500 g a 700 g	-	-	45 g	15 g
< 700 g	-	-	70 g	40 g

VET LINE

making it easy



PACKAGE WEIGHT: 1,4 KG



Micro-organisms which remain active in the intestines. With very beneficial effects: helping to balance out bacterial flora & boosting the immune system



Highest quality, stability & freshness guaranteed. This new packaging prevents the oxidation of vitamins and omega-3 and 6 fatty acids



Bronchodilator effect



Improves the body's defences against infectious diseases



Made with the best wild hay and plants, with an exceptional palatability, which make voluntary ingestion easier



Adjuvant in the treatment of respiratory system illnesses

Small Rodents Respiratory

VETSR

DESCRIPTION:

Complete and well balanced feed with medicine plants that help to reinforce and improve the breathing functions of the small rodents and the pathological processes that accompany hypoxia. The medicinal plants contained in the formula (for example: *Verbascum*, *Tussilago* and *Althaea*) are known for their ability to improve the respiratory system's functions. They work to reduce coughing, inflammation in the respiratory system, pneumonia, bronchitis, allergies and asthma.

The lung capacity of small rodents is very low. As a result, problems affecting the oxygen transfer in the lungs cause serious organic hypoxia symptoms. The plants included in this formula help reduce respiratory symptoms such as coughing, inflammation, pneumonia, bronchitis, allergies and asthma, improving the perfusion of the tissue and recovery from the process. SMALL RODENTS RESPIRATORY can be used for a longer period of time without causing any adverse side effects.

COMPOSITION:

Cereals, wild meadow hay, sunflowermeal, soya bean, wheatmeal, barleycorn, common marshmallow (*althaea officinalis*), mauve (*malva mauritiana*), horehound (*marrubium vulgare*), coltsfoot (*tussilago farfara*), dense-flowered mullein (*verbascum densiflorum*), birch (*betula pendula*), natural prebiotics and probiotics, chestnut (*castanea sativa miller*), orange blossom, hyssop (*hyssopus officinalis*).

MAIN ACTIVE COMPONENTS:

- COMMON MARSHMALLOW (*Althaea officinalis*)
- MAUVE (*Malva mauritiana*)
- HOREHOUND (*Marrubium vulgare*)
- COLTSFOOT (*Tussilago farfara*)
- DENSE-FLOWERED MULLEIN (*Verbascum densiflorum*)
- BIRCH (*Betula Pendula*)
- CHESTNUT (*Castanea Sativa Miller*)
- ORANGE BLOSSOM
- HYSSOP (*Hyssopus officinalis*)

INSTRUCTIONS FOR USE :

Dispense according to veterinary prescription. Keep in cool and dry place.

Administrate the first 10 days together with usual feed at 50%, progressively enlarge the ration until we achieve the 100% of the indicated feed.

The treatment should be maintained for at least two weeks after the respiratory symptoms disappear. It should be considered that curing respiratory disorders with small rodents is a long and complex process. Where necessary, it is recommended that the diet be combined with an antimicrobial treatment and/or the nebulisation of mucolytic agents, as directed by your vet. Do not give your pet more food until it has consumed the entire mixture.

ENSURE THAT THE ANIMAL ALWAYS HAS CLEAN FRESH WATER AVAILABLE.

INDICATIONS:

- As a preventive measure, it is recommended to use this product throughout the winter for animals that live outdoors.
- Reduction of cough symptoms
- Inflammation and infection of the respiratory tree
- Pneumonia.
- Allergies and asthma.
- Emphysema and atelectasis.
- Non-specific respiratory failure.

CONTRA-INDICATIONS:

- Due to lack of side-effects caused by the formula, the use of this food is recommended at all times except during pregnancy.

Formula suitable for improving the functioning of the respiratory system ✓

Adjuvant in the treatment of respiratory system illnesses ✓

Bronchodilator ✓

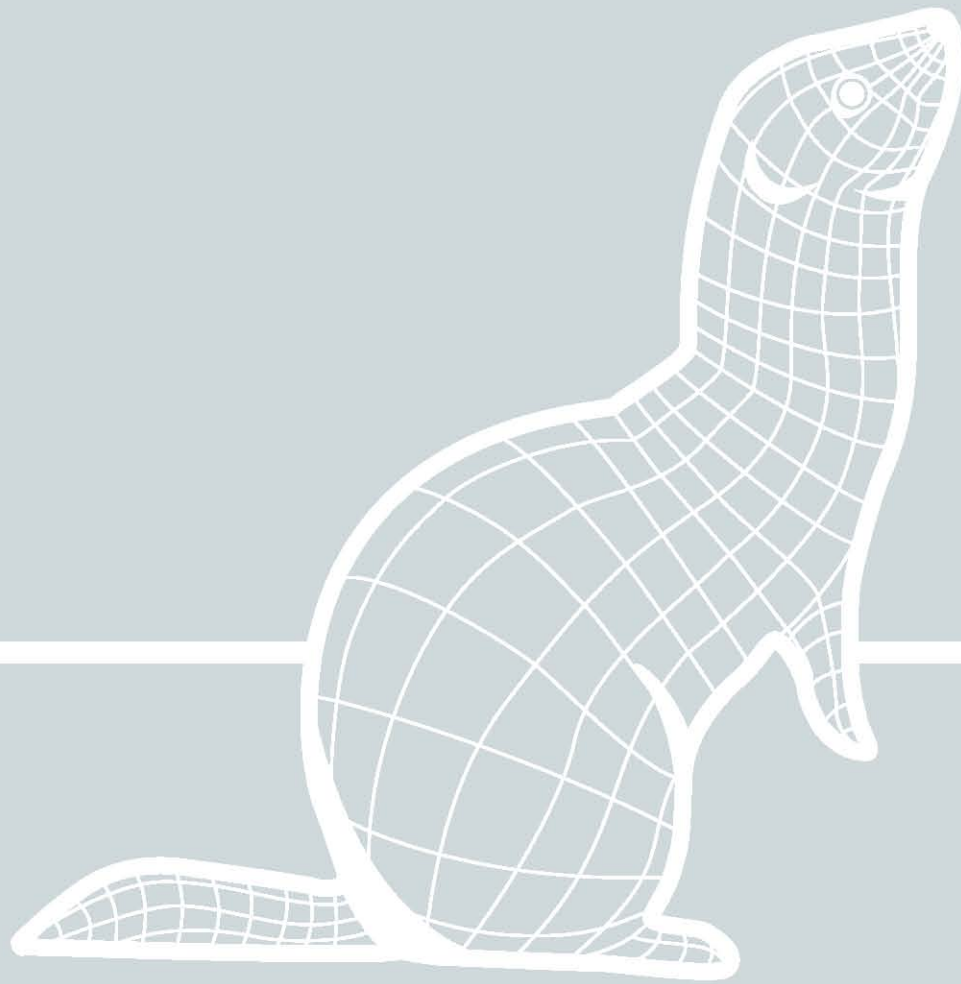
Mucolytic agent ✓

Prevents respiratory illnesses in adverse climate conditions ✓

RECOMMENDED DAILY FEEDING:

WEIGHT	HAMSTER	SQUIRREL	RAT	CHINCHILLA
10 g	3 g	-	-	-
30 g	5 g	-	-	-
50 g a 100 g	10 g	10 g	-	-
100 g a 200 g	-	15 g	-	-
200 g a 500 g	-	20 g	-	-
500 g a 700 g	-	-	45 g	15 g
< 700 g	-	-	70 g	40 g





Ferrets



VET LINE

making it easy



PACKAGE WEIGHT: 2 KG



Micro-organisms which remain active in the intestines. With very beneficial effects: helping to balance out bacterial flora & boosting the immune system



Highest quality, stability & freshness guaranteed. This new packaging prevents the oxidation of vitamins and omega-3 and 6 fatty acids



Contributes towards better digestion and absorption of food



Improves the body's defences against infectious diseases



An easily digestible top-quality raw material. Made with high biological value protein



Prevents dysbiosis of the intestinal microflora, defends against bad malabsorption and diarrhoea



Ferrets Intestinal

VETFI

DESCRIPTION:

A complete food for small exotic carnivores with intestinal problems

FERRET INTESTINAL is a dietary food using fresh ingredients mainly including lean chicken and whole fresh eggs produced on local farms, white fish in powdered form and easy to digest carbohydrates. Using low-temperature processing methods, the fresh ingredients are slowly simmered to preserve their flavour and natural properties.

A mix of pure medicinal plants is then added to this high quality formula. After ingestion, these plants strengthen and optimize the digestive system's functions. Moreover, they have an anti-inflammatory effect on the intestine. The recipe is formulated with prebiotics and probiotics that have the additional effect of protecting the mucus membranes of the stomach and intestine, reducing flatulence and contributing towards improved use of the nutrients from digested foods. This product is especially recommended for nausea, gastroenteric diseases and during convalescence after digestive processes.

Its use is especially suitable for ferrets suffering recurrent gastritis or enteritis or with weight-loss or chronic malnutrition problems associated with poor digestion – the "poor absorption syndrome".

COMPOSITION:

Food based on fresh poultry with high biological value protein.

Fresh chicken meat, rice, animal fat (chicken), corn, fish flour, corn gluten, brewer's yeast, dehydrated egg, hydrolysed chicken liver, flax seed, chlorella, milk thistle (*Silybum marianum (L.) Gaertn.*), spotted thistle (*Cnicus benedictus L.*), angelica (*archangelica officinalis*), lesser burdock (*arctium minus Bernh.*), mint (*mentha piperita L.*), oligosaccharides (fructo and mono), monocalcium phosphate, trace elements, vitamins, natural prebiotics and probiotics, sodium and potassium chloride, olive oil. It also contains plant extracts (*poly phenols and flavonoids*)

MAIN ACTIVE COMPONENTS:

- CHLORELLA
- MILK THISTLE (*Silybum marianum (L.) Gaertn.*)
- SPOTTED THISTLE (*Cnicus benedictus L.*)
- ANGELICA (*Archangelica officinalis*)
- LESSER BURDOCK (*Arctium minus Bernh.*)
- MINT (*Mentha piperita L.*)
- CHICKEN
- DEHYDRATED EGG

INSTRUCTIONS FOR USE :

Dispense according to veterinary prescription.

Keep in cool and dry place. Administrate the first 10 days together with usual feed at 50%, progressively enlarge the ration until we achieve the 100% of the indicated feed.

When dealing with acute disorders, and assuming that the animal's normal food is part of the CUNIPIC physiological range, you can give the animal 100% of this new INTESTINAL diet from day one.

The duration of treatment is determined by the individual animal's pathology.

In cases of acute illness, the dietary treatment should have a minimum duration of 3 months, taking into account the period of time required for the hair on the lining of intestines to regenerate. When the illness is chronic, the dietary treatment can last for life depending on the advice of your vet. This product can be used for a longer period of time without fear of side effects.

ENSURE THAT THE ANIMAL ALWAYS HAS CLEAN FRESH WATER AVAILABLE.

INDICATIONS:

- Diarrhoea
- Inflammatory bowel disease
- Eosinophilic enteritis
- Maldige
- Maldigestion/malabsorption syndrome
- Colitis
- Convalescence
- Flatulence
- Especially recommended for ferrets with recurring gastritis or enteritis
- Excessive growth of bacteria and intestinal flora dysbiosis

CONTRA-INDICATIONS:

- Hepatic encephalopathy
- Uraemia

Optimizes the digestive system's processes ✓

Protects mucus membranes ✓

Because of the high-energy contents of the food, portions can be smaller thus reducing strain on the intestines ✓

Improves absorption of nutrients from food ✓

Has a detoxifying effect on toxic bacteria being present ✓

The formula's highly digestible ingredients compensate for the intestine's reduced enzymatic activity, thus guaranteeing optimal absorption of nutrients ✓

The intestinal diet's exceptional palatability and its high-energy contents facilitate the animal's gaining weight during the convalescence period ✓

RECOMMENDED DAILY INTAKE:

WEIGHT	MALE	FEMALE
>400 g	20 g	20 g
400 g / 500 g	25 g	25 g
500 g / 900 g	50 g	40 g
<900 g	50 g	40 g



VET LINE

making it easy

CHAMOMILLE
& GERMAN
CHAMOMILLE



SAINT JOHN'S
WORT



BLADDERWRACK



COMMON NETTLE



GOLDENROD
*(Solidago
virgaurea)*



CALENDULA



LESSER BURDOCK



CHICKEN



DEHYDRATED
EGGS



PACKAGE WEIGHT: 2 KG



Micro-organisms which remain active in the intestines. With very beneficial effects: helping to balance out bacterial flora & boosting the immune system



Highest quality, stability & freshness guaranteed. This new packaging prevents the oxidation of vitamins and omega-3 and 6 fatty acids



Fights smells naturally, with an insect and external parasite repelling effect



Improves the body's defences against infectious diseases



Especially designed for long-hair breeds



Enriched with essential fat acids granting a more shiny and healthier coat

Ferrets

Skin Support

VETFSS

DESCRIPTION:

A complete food for small exotic carnivores with skin and cutaneous appendage problems.

Suitable for those pathological symptoms affecting the skin and skin appendages. SKIN SUPPORT is a dietary food with fresh ingredients including mainly lean chicken and whole fresh eggs (produced on local farms), white fish in powdered form and easy to digest carbohydrates. Using low-temperature processing methods, the fresh ingredients are slowly boiled to preserve their flavour and natural properties. A mixture of pure medicinal plants containing everything your pet needs for a thick, shiny coat is added to this high-quality formula. The medicinal plants added, such as *Galium* and *fucus* are well known for their ability to positively influence the healing process from some illnesses, including eczema, hair loss, alopecia, skin inflammation, dandruff and different allergies. They act as an anti-parasitic and have an anti-inflammatory effect. The formula improves the organism's immunity and improves the skin and hair renewal process. The long-chain Omega-3 fatty acids modulate and control cutaneous inflammatory reactions. The antioxidant synergy complex reduces oxidative stress and counters the effects of free radicals. Due to its natural character, the preparation is suitable for long-term use, and with physiological diets of long-hair adult animals.

COMPOSITION:

Fresh chicken meat, rice, animal fat (chicken), corn, fish flour, corn gluten, brewer's yeast, dehydrated egg, hydrolysed chicken liver, flax seed, german chamomile (*matricaria recutita l.*), saint john's wort (*galium verum l.*), bladderwrack (*fucus vesiculosus*), sea buckthorn (*hippophæ rhamnoides l.*), common nettle (*urtica dioica l.*), goldenrod (*solidago virgaurea l.*), oligosaccharides (fructo and mono), monocalcium phosphate, trace elements, vitamins, calendula (*calendula officinalis l.*), sodium and potassium chloride, olive oil, lesser burdock, it also contains plant extracts (*poly phenols and flavonoids*), yucca extract, l-tyrosine, l-lysine, dl-methionine.

MAIN ACTIVE COMPONENTS:

- GERMAN CHAMOMILE (*Matricaria recutita L.*)
- SAINT JOHN'S WORT (*Galium verum L.*)
- BLADDERWRACK (*Fucus vesiculosus*)
- SEA BUCKTHORN (*Hippophæ rhamnoides L.*)
- COMMON NETTLE (*Urtica dioica L.*)
- GOLDENROD (*Solidago virgaurea L.*)
- CALENDULA (*Calendula officinalis L.*)
- LESSER BURDOCK

■ CHICKEN

■ DEHYDRATED EGGS

INSTRUCTIONS FOR USE:

Dispense according to veterinary prescription. Keep in cool and dry place.

Administrate the first 10 days together with usual feed at 50%, progressively enlarge the ration until we achieve the 100% of the indicated feed.

In the case of acute disorders, and assuming that the animal's normal food is part of the CUNIPIC physiological range, you can provide this new diet from day one. The duration of treatment is determined by the individual animal's pathology.

From the time cutaneous disorders appears, an initial treatment of 2 months is recommended in order to obtain visible results. In the case of chronic disorders, cutaneous diet treatment can be provided for life.

ENSURE THAT THE ANIMAL ALWAYS HAS CLEAN FRESH WATER AVAILABLE.

INDICATIONS:

- Atopic dermatitis
- Ichthyosis
- Support of skin function (dermatosis, hair loss)
- Pyoderma - Skin healing
- Symptoms in relation to external parasitic diseases, such as mange, fleas and ticks
- Ringworm or other fungal infections of the skin or appendages
- External otitis
- Works on the generation of new hair follicles during adrenal disease (in connection with surgery or medical treatment)
- Life-long treatment for species with long or particular hair, such as angora ferrets.
- During moulting

CONTRA-INDICATIONS:

- Pregnancy
- Breast feeding
- Hyperlipidaemia
- Pancreatitis, or with a history of pancreatitis episodes

Improves the skin's resistance to adverse external influences ✓

Improves the metabolic routes ✓

Improves the renewal process ✓

Strengthens the immune system against fungi, parasites and other secondary agents that affect the health of a ferret's skin and hair ✓

Natural anti-parasitic ✓

Suitable for ANGORA and LONG-HAIR Ferrets ✓

Improves the cutaneous healing process ✓

RECOMMENDED DAILY FEEDING:

WEIGHT	MALE	FEMALE
>400 g	20 g	20 g
400 g / 500 g	25 g	25 g
500 g / 900 g	50 g	40 g
<900 g	50 g	40 g

VET LINE

making it easy

SAINT JOHN'S WORT



WILD STRAWBERRY



BLADDERWRACK



SPIRULINA



COMMON NETTLE



ROSEMARY



CALENDULA



CHICKEN



DEHYDRATED EGGS



PACKAGE WEIGHT: 2 KG



Micro-organisms which remain active in the intestines. With very beneficial effects: helping to balance out bacterial flora & boosting the immune system



Highest quality, stability & freshness guaranteed. This new packaging prevents the oxidation of vitamins and omega-3 and 6 fatty acids



Bronchodilator effect



Improves the body's defences against infectious diseases



Stimulates consumption of food by animals whose sense of smell has changed; the food has excellent organoleptic properties



Auxiliary in the treatment of respiratory system illnesses

Ferrets Respiratory

VETFR

DESCRIPTION:

A complete food for small exotic carnivores with respiratory problems.

Recommended for diseases that affect the respiratory system of ferrets. RESPIRATORY is a dietary food consisting of fresh ingredients, mainly lean chicken meat and whole fresh eggs (from local farms), white fish in powdered form and easy-to-digest carbohydrates. Using low-temperature processing methods, the fresh ingredients are slowly simmered to preserve their flavour and natural properties.

This high-quality menu also has a pure blend of medicinal plants that can help improve respiratory functions and the pathological processes related to hypoxia. The medicinal plants included, such as *Arthrospira* and *Galium*, have bronchodilator, mucolytic and immuno-stimulant properties. They have a beneficial effect in reducing respiratory symptoms such as coughing, inflammation, pneumonia, bronchitis, allergies and asthma. The physical condition of ferrets deteriorates sharply when their respiratory function is affected.

COMPOSITION:

fresh chicken meat, rice, animal fat (chicken), corn, fish flour, corn gluten, brewer's yeast, dehydrated egg, hydrolysed chicken liver, flax seed, saint john's wort (*galium verum l.*), wild strawberry, bladderwrack (*focus vesiculosus*), spirulina (*arthrospira platensis*), common nettle (*urtica dioica l.*), rosemary, oligosaccharides (fructo and mono), monocalcium phosphate, trace elements, vitamins, natural prebiotics and probiotics, sodium and potassium chloride, olive oil, calendula (*calendula officinalis l.*), it also contains plant extracts (poly phenols and flavonoids), yucca extract, l-taurine, l-lysine, dl-methionine.

MAIN ACTIVE COMPONENTS:

- SAINT JOHN'S WORT (*Galium verum L.*)
- WILD STRAWBERRY
- BLADDERWRACK (*Focus vesiculosus*)
- SPIRULINA (*Arthrospira platensis*)
- COMMON NETTLE (*Urtica dioica L.*)
- ROSEMARY
- CALENDULA (*Calendula officinalis L.*)

INSTRUCTIONS FOR USE:

Dispense according to veterinary prescription. Keep in cool and dry place.

Administrate the first 10 days together with usual feed at 50%, progressively enlarge the ration until we achieve the 100% of the indicated feed. In the case of acute disorders, and assuming that the animal's normal food is part of the CUNIPIC physiological range, you can provide this new diet from day one.

The duration of treatment is determined by the individual animal's pathology.

The diet should be provided when respiratory disorders appear again during 20 days after the symptoms have disappeared.

ENSURE THAT THE ANIMAL ALWAYS HAS CLEAN FRESH WATER AVAILABLE.

INDICATIONS:

- As a preventive measure, it is recommended to use this product throughout the winter for animals that live outdoors.
- Reduction of cough symptoms
- Inflammation and infection of the respiratory tree.
- Pneumonia.
- Allergies and asthma.
- Emphysema and atelectasis.
- Non-specific respiratory failure.

CONTRA-INDICATIONS:

- Due to lack of side-effects caused by the formula, the use of this food is recommended at all times except during pregnancy.

Immuno-stimulant ✓

Suitable for improving the functioning of the respiratory system ✓

As an adjuvant in the treatment of respiratory system illnesses ✓

Bronchodilator ✓

Mucolytic agent ✓

Prevents respiratory illnesses in adverse climate conditions ✓

Reduces the symptomatology in asthmatic animals or those with allergies ✓

RECOMMENDED DAILY FEEDING:

WEIGHT	MALE	FEMALE
>400 g	20 g	20 g
400 g / 500 g	25 g	25 g
500 g / 900 g	50 g	40 g
<900 g	50 g	40 g



BEFORE

VET LINE
making it easy



AFTER





Display Rack

EXPVET



DISPLAY RACK FOR VET LINE

ASSEMBLED MEASURES (high x front wide x bottom):
190 X 61,5 X 46 cm

PACKED MEASURES (high x wide x bottom):
108 X 73,5 X 43,2 cm

FEATURES:

- Equipped with 13 items
- Disassemble display
- Poliestiren Canopy digitaly printed
- Self facing for pricing , features ,description
- 4 racks to place 3 different items and 3 units of each one
- 4 steel wheels, 2 of them with breaks



www.cunipic.com

C/ Estació nº 54 • 25680 Vallfogona de Balaguer • Lleida (Spain)

Tel. (+34) 973991997 • (+34) 973432363 • (+34) 973432366 • Fax. (+34) 973432369

